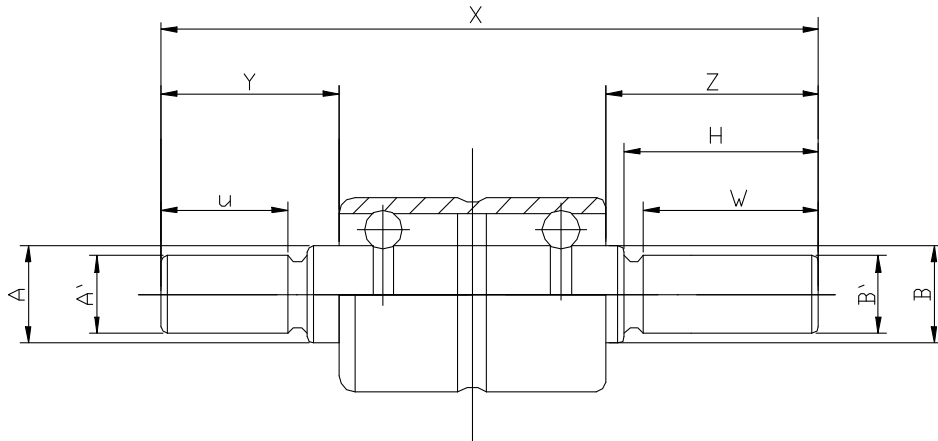


Water Pump Bearings



WEIYA Bearing Type			Shaft O.D.			OS.Shaft O.D.				X	Y	Z	H	U	W	Weight (kg)
			Standard			Standard		Step								
FAG	NSK		A	B	B'	A	B	A'	B'							
WIB1630160	W2628-1	885094S	0.6267	0.6267	-	0.6287	0.6287	-	-	6.281	3	1.75	1.5	-	-	0.327
WIB1630106	W2417-2	885097	0.6267	0.6267	-	0.6287	0.6287	-	-	4.172	0.813	1.828	1.642	-	-	0.243
WIB1630124	W2486-2	885100 B	0.6267	0.6267	-	0.6287	0.6287	-	-	4.869	1.25	2.088	1.75	-	-	0.27
WIB1630132A	W2520	885104A	0.6267	0.6267	-	0.6287	0.6287	-	-	5.206	1.984	1.688	1.438	-	-	0.284
WIB1630121	W2476	885105	0.6267	0.6267	-	0.6287	0.6287	-	-	4.75	1.156	2.063	1.813	-	-	0.266
WIB1630106A	W2417	885106	0.6267	0.6267	-	0.6287	0.6287	-	-	4.17	0.159	2.48	-	-	-	0.242
WIB1630110A		885107C	0.6267	0.6267	-	0.6287	0.6287	-	-	4.312	0.578	2.203	1.953	-	-	0.248
WIB163098A	W2384S	885110	0.6267	0.6267	-	0.6287	0.6287	-	-	3.844	0.75	1.563	-	-	-	0.208
WIB1630109	W2428-1	885111D	0.6267	0.6267	0.449	0.6287	0.6287	-	0.501	4.281	1.078	1.672	1.482	-	1.44	0.247
WIB1630134	W2527	885113B	0.6267	0.6267	-	0.6287	0.6287	-	-	5.276	1.678	2.067	1.5	-	-	0.287
WIB1630150	W2590-2	885116C	0.6267	0.6267	-	0.6287	0.6287	-	-	5.907	1.382	2.994	-	-	-	0.312
WIB1630162	W2637	885117	0.6267	0.6267	-	0.6287	0.6287	-	-	6.375	2.297	2.547	2.328	-	-	0.331
WIB1630119	W2468	885118	0.6267	0.6267	-	0.6287	0.6287	-	-	4.688	1.469	1.688	1.438	-	-	0.263
WIB1630084	W2334S	885122	0.6267	0.6267	-	0.6287	0.6287	-	-	3.323	0.512	1.28	-	-	-	0.188
WIB1630119A	W2470	885135S	0.6267	0.6267	0.4724	0.6287	0.6287	-	0.4744	4.703	1.281	1.891	-	-	1.2	0.264
WIB1630103	W2406-1	885140	0.6267	0.6267	-	0.6287	0.6287	-	-	4.063	0.922	1.61	1.421	-	-	0.238
WIB1630128	W2503	885141	0.6267	0.6267	-	0.6287	0.6287	-	-	5.031	1.016	2.484	-	-	-	0.277
WIB1630143	W2562-1	885144	0.6267	0.6267	-	0.6287	0.6287	-	-	5.625	1.578	2.516	2.235	-	-	0.301
WIB1630102A	W2404S	885147	0.6267	0.6267	0.499	0.6287	0.6287	-	0.501	4.031	0.875	1.625	-	-	1.5	0.215
WIB1630128A	W2503-6	885151B	0.6267	0.6267	-	0.6287	0.6287	-	-	5.031	1.75	1.75	-	-	-	0.277
WIB163073	W2289	885154	0.6267	0.6267	-	0.6287	0.6287	-	-	2.89	0.156	0.156	-	-	-	0.191
WIB1630113	W2445	885155	0.6267	0.6267	-	0.6287	0.6287	-	-	4.453	1.249	1.249	1.423	-	-	0.254
WIB1630113A	W2446	885156	0.6267	0.6267	-	0.6287	0.6287	-	-	4.468	1.078	1.078	1.55	-	-	0.254
WIB1630138	W2543	885158	0.6267	0.6267	-	0.6287	0.6287	-	-	5.437	2.297	2.297	1.36	-	-	0.293
WIB1630135	W2531-1	885158AA	0.6267	0.6267	-	0.6287	0.6287	-	-	5.312	1.312	1.305	-	-	-	0.288
WIB1630136A	W2537	885158P	0.6267	0.6267	-	0.6287	0.6287	-	-	5.37	5.37	1.537	1.928	-	-	0.29
WIB1630105A	W2414-2	885159	0.6267	0.6267	-	0.6287	0.6287	-	-	4.141	4.141	0.938	1.423	-	-	0.241

WEIYA Bearing Type			Shaft O.D.			OS.Shaft O.D.				X	Y	Z	H	U	W	Weight(kg)
			Standard		B'	Standard		Step								
	FAG	NSK	A	B			A	B	A'	B'						
WIB1630083	W2325	885165	0.6267	0.6267		0.6287	0.6287			3.25	0.156	1.563				0.206
WIB1630128B	W3503-5	885166K	0.6275	0.6275	-	0.6295	0.6295	-	-	5.031	1.219	2.281	2.031	-	-	0.277
WIB1630112	W2439	885167	0.6267	0.6267		0.6287	0.6287			4.39	0.937	1.922	1.672			0.251
WIB1630112A	W2440-4	885167D	0.6267	0.6267		0.6287	0.6287			4.4	1.15	1.719	1.53			0.252
WIB1630122	W3481-6	885168AD	0.6275	0.6275	-	0.6295	0.6295	-	-	4.813	1.528	1.7	1.507	-	-	0.269
WIB1630122B	W2481-1	885168C	0.6267	0.6267		0.6287	0.6287			4.813	1.125	2.157	1.937			0.268
WIB1630122C	W3481-1	885168H	0.6275	0.6275		0.6295	0.6295			4.813	1.125	2.157	1.937			0.269
WIB1630129	W2507	885169	0.6267	0.6267	-	0.6287	0.6287	-	-	5.078	1.25	2.297	2.109	-	-	0.278
WIB163069	W2272	885198	0.6267	0.6267		0.6287	0.6287			2.72	0.16	1.029				0.185
WIB163061		885198AF	0.6267	0.6267	-	0.6287	0.6287	-	-	2.4	0.156	0.713		-	-	0.172
WIB1630122A	W2478-1	885238	0.6267	0.6267		0.6287	0.6287			4.788	1.237	2.02	1.71			0.267
WIB1630124A	W2489-5	885245	0.6267	0.6267	-	0.6295	0.6295	-	-	4.898	1.57	1.797	1.611	-	-	0.272
WIB1630141	W2555	885248	0.6267	0.6267		0.6287	0.6287			5.551	1.926	2.094	1.735			0.298
WIB1630110B	W2432	885305	0.6267	0.6267		0.6287	0.6287			4.339	0.935	1.872				0.249
WIB163098	W2385	885307	0.6267	0.6267		0.6287	0.6287			3.858	0.67	1.657				0.23
WIB163088	WS2346-1	885319+	0.6267	0.6267		0.6287	0.6287			3.464	0.709	1.693				0.193
WIB1630102	W2401-3	885321	0.6275	0.6275		0.6287	0.6287			3.996	0.689	1.776				0.236
WIB1630124B	W2488S	885326	0.6267	0.6267	0.4724	0.6287	0.6287		0.4744	4.882	1.654	1.697			1.59	0.244
WIB1630112B	W2440-5S	885327	0.6267	0.6267	0.4724	0.6287	0.6287		0.4744	4.409	1.181	1.697			1.59	0.225
WIB1630101		885328	0.6267	0.6267	0.4724	0.6287	0.6287	0.55	0.4744	3.976	0.945	1.5		0.9	1.38	0.203
WIB163093	W2366	885330	0.6267	0.6267		0.6287	0.6287			3.661	0.728	1.402				0.222
WIB1630110	W2434	885332	0.6267	0.6267		0.6287	0.6287			4.436	0.841	0.974	1.614			0.25
WIB1630116		885337A	0.6267	0.6267	-	0.6287	0.6287	-	-	4.457	0.807	2.209		-	-	0.258
WIB163085	WS2332-1	885342+	0.6267	0.6267		0.6287	0.6287			3.327	0.679	1.585	1.467			0.188
WIB1630099A		885351	0.6267	0.6267	0.4724	0.6287	0.6287			3.917	0.65	1.736			1.68	0.203
WIB1630115		885354	0.6267	0.6267	0.4724	0.6287	0.6287		0.4744	4.528	0.65	2.347		-	1.59	0.229
WIB1630100		885355	0.6267	0.6267	0.4724	0.6287	0.6287			3.937	0.945	1.461			1.38	0.209